

Leitmotifs.



Thursday, 08 October 2020



Today's Learning Goals

By the end of the lesson you should:-

** Know the term leitmotif and be able to identify at least 2 key ones.*

Learning Objectives.

To understand the musical elements of film music.

Key Words

Themes and motifs.



Thursday, 08 October 2020



Learning Objectives.

To understand the musical elements of film music.

Key Words

Themes and motifs.



Thursday, 08 October 2020

Learning Objectives.



leitmotif

/ˈlaɪtməʊˌtiːf/

noun

plural noun: **leitmotifs**

a recurrent theme throughout a musical or literary composition, associated with a particular person, idea, or situation.

Themes and motifs.



Thursday, 08 October 2020

<https://www.onlinepianist.com/virtual-piano>

Use the link above to access a virtual piano.

Use this to try and play the following leitmotifs.

Work out the notes of the pieces first and then have a go at playing them.

Learning Objectives.

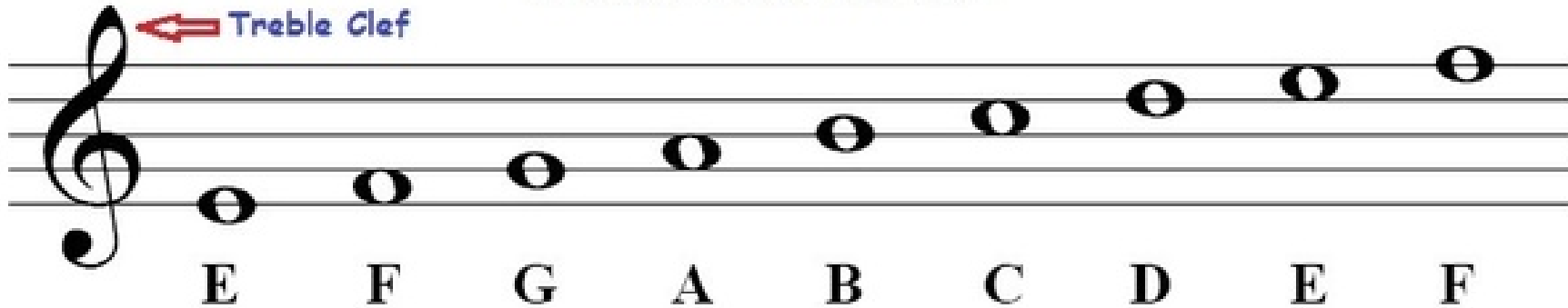
To understand the musical elements of film music.

Key Words

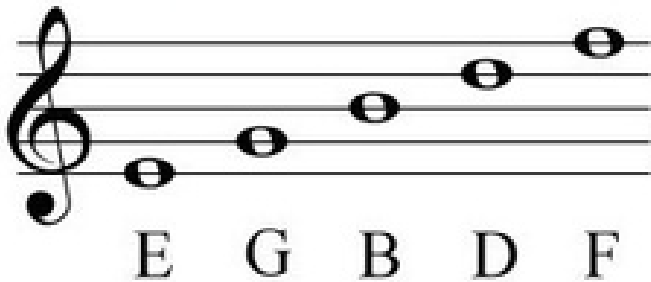
Themes and motifs.



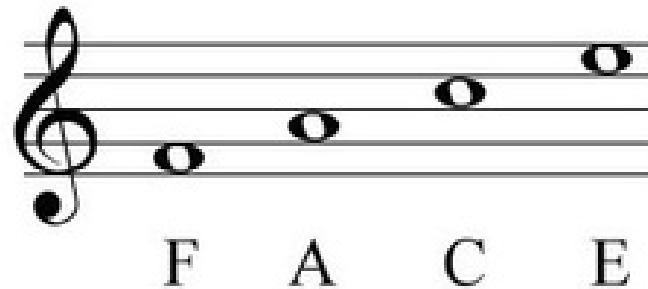
Treble Clef Notes



Line Notes



Space Notes



E G B D F

F A C E

Learning Objectives.

To understand the musical elements of film music.

Key Words

Themes and motifs.



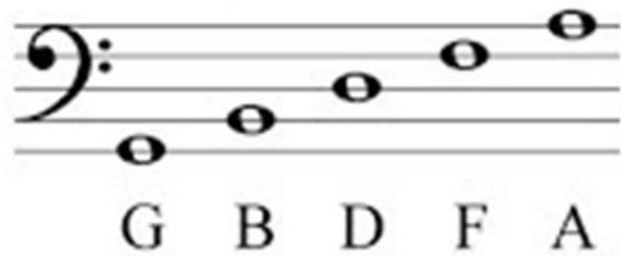
Thursday, 08 October 2020

Bass Clef

Bass Clef Notes



Line Notes:



Space Notes:



Learning Objectives.

To understand the musical elements of film music.

Key Words

Leitmotifs.



Learning Objectives.

To understand the musical elements of film music.

To understand the musical elements of film music.

Key Words

--

Who am I?

[illegible]

Leitmotifs.



Learning Objectives.

To understand the musical elements of film music.

To understand the musical elements of film music.

[illegible]

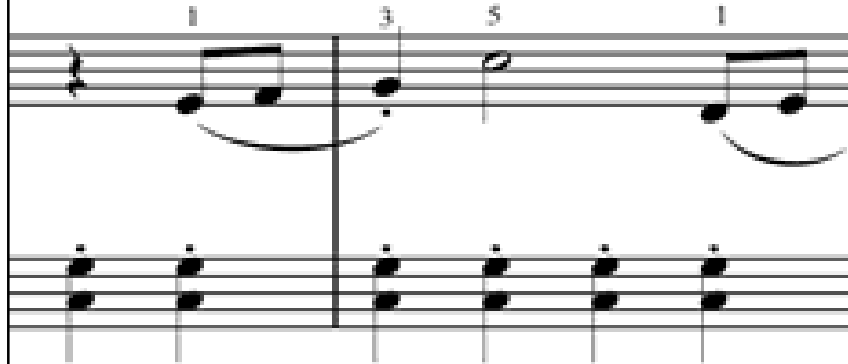
Who am I?

The image shows a musical score for the song "The Rose Tree". It consists of two staves: a treble staff and a bass staff, both in 4/4 time. The treble staff has a key signature of one flat (Bb) and a tempo/mood marking of "mp". The bass staff has a key signature of one flat (Bb) and a tempo/mood marking of "mp". The melody is written in the treble staff, and the bass line is written in the bass staff. The bass line includes fingerings: 3, 2, and 4. The text "8vb throughout" is written below the bass staff, indicating an octave transposition.

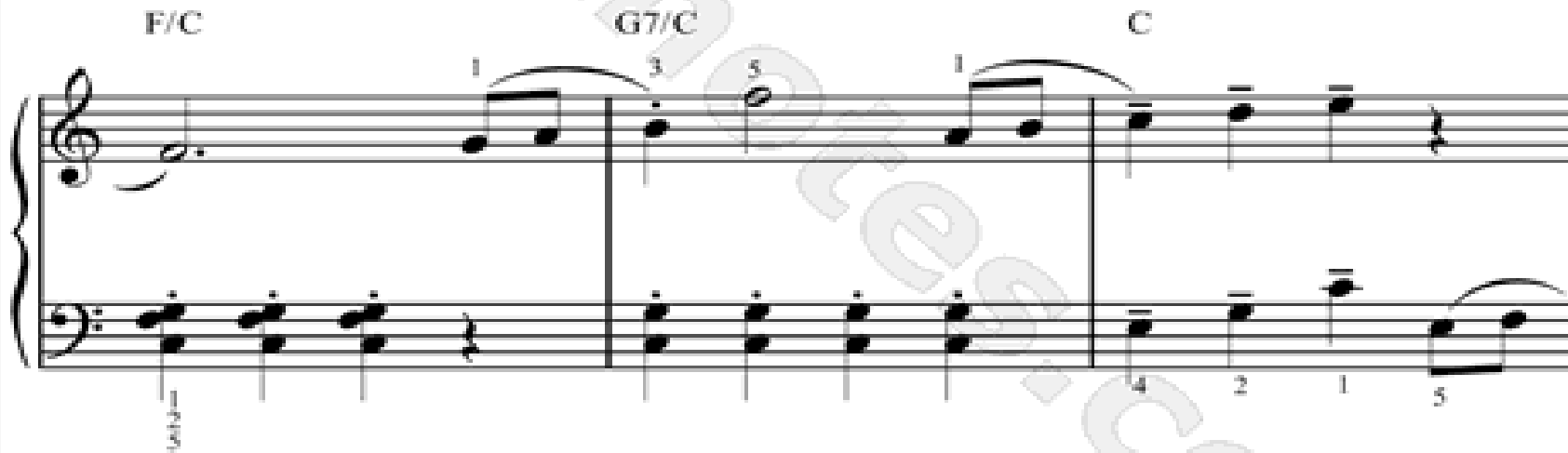
A musical score for the song 'The Rose Tree'. It features a treble and bass staff. The treble staff has a treble clef and a key signature of one flat (B-flat). The bass staff has a bass clef and a key signature of one flat (B-flat). The melody is written in the treble staff, and the bass line is written in the bass staff. The score is divided into two measures by a vertical bar line. The first measure contains a whole note chord in the treble and a half note chord in the bass. The second measure contains a whole note chord in the treble and a half note chord in the bass. The notes are as follows: Measure 1: Treble (C4, E4, G4), Bass (F3, A2, C3). Measure 2: Treble (C4, E4, G4), Bass (F3, A2, C3).

Leitmotifs.

Who am I?



20



Learning Objectives.

To understand the musical elements of film music.

Key Words