

The Carnival of the Animals

The Carnival of the Animals is a series of pieces of music that describes different animals.



You are going to listen to the pieces and try to guess what animal is being described through the music.

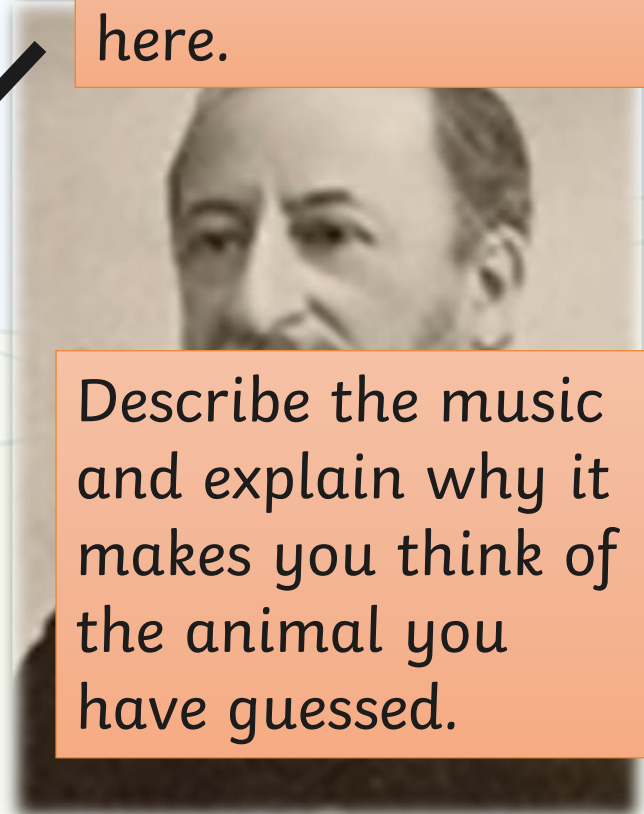
Write your guess and get ready to explain your guess to the class.

Remember, it's not about whether you guess the right animal but whether your guess makes sense and matches the music.



Piece One

Guess the animal here.



What is the animal?

I think the first piece is about a...

The music sounds...

The instruments I can hear are...

Describe the music and explain why it makes you think of the animal you have guessed.

List the instruments you think you can hear.

Click the link.



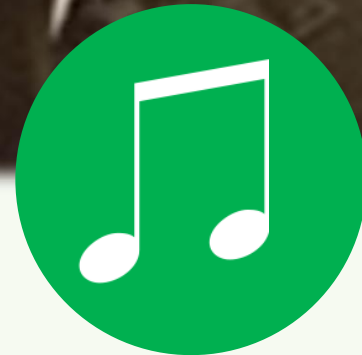
Piece Three

What is the animal?

I think the third piece is about a...

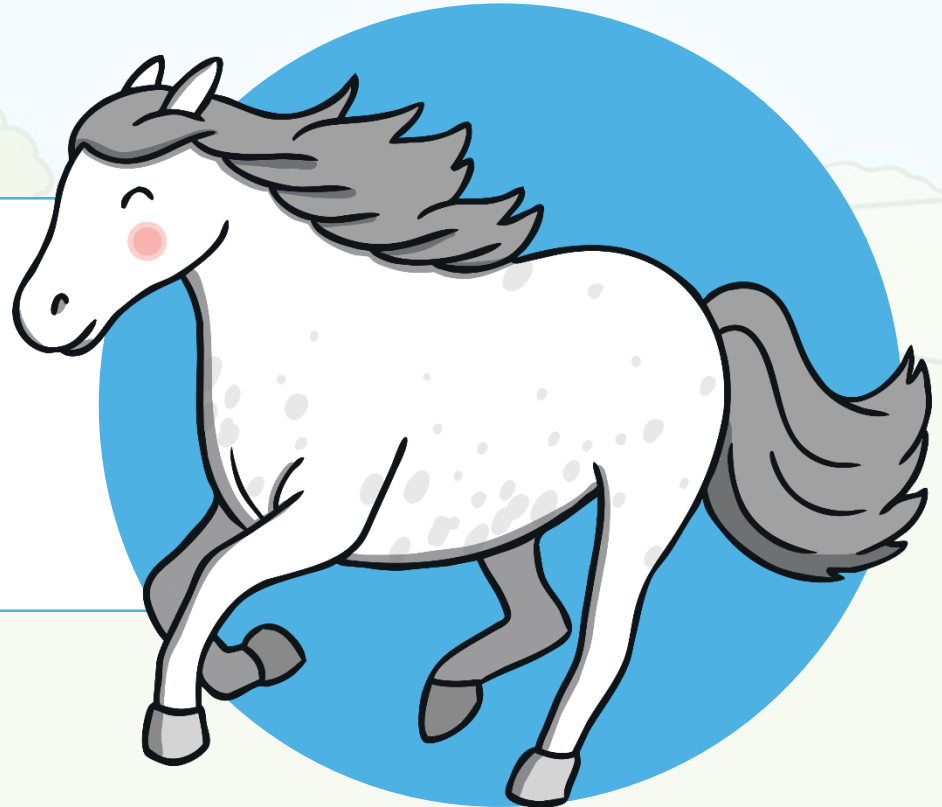
The music sounds...

The instruments I can hear are...



Piece Three

This piece is called 'Swift Animals'. The piano goes very quickly from low notes to high notes, to make us think about animals running really fast.



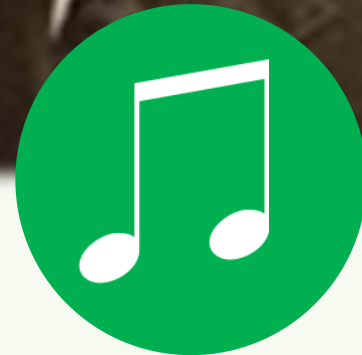
Piece Four

What is the animal?

I think this piece is about a...

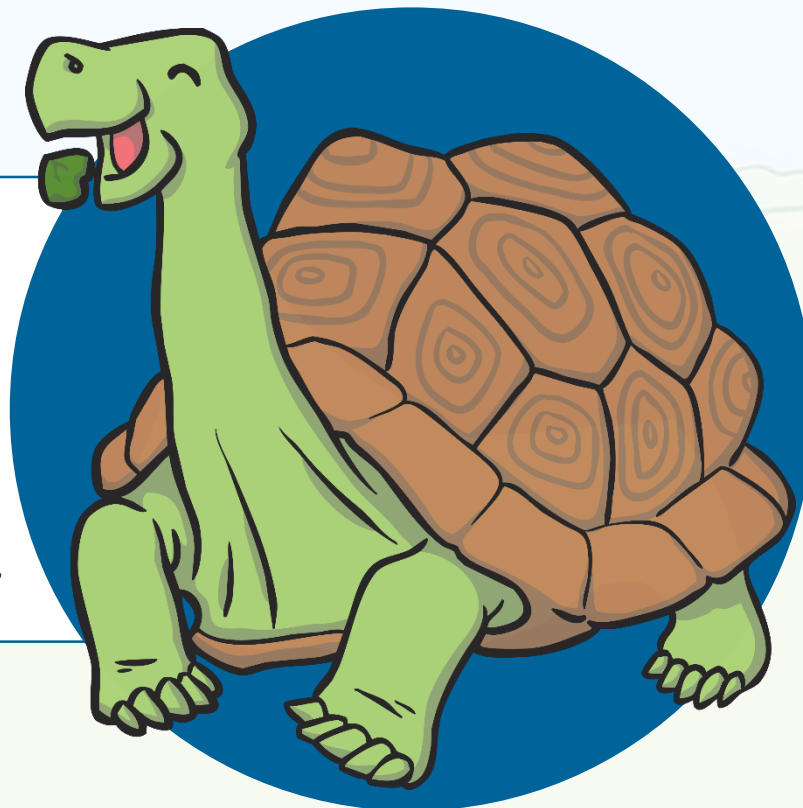
The music sounds...

The instruments I can hear are...



Piece Four

The next piece is about tortoises. The music is very slow to suggest how slowly a tortoise moves. Do you recognise the tune being played? It's the music known as the can-can, which is usually a fast piece of music people dance to.



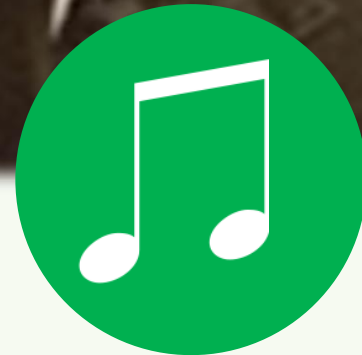
Piece Five

What is the animal?

I think this piece is about a...

The music sounds...

The instruments I can hear are...



Piece Five

The next piece is about elephants. The tune is played on a double bass, which is the largest of the string instruments. It plays very low notes to suggest how big elephants are.

